



CTP Engine Bearings

CTP Engine Bearings

CTP Copper/Lead bearings are made of a sintered trimetal with a base alloy copper, lead and tin with a nickel dam and Babbitt top layer. The F780 alloy has a higher load carrying capacity than aluminum or other copper/lead alloy. As a result of this advance technology material, F780 will provide longer life in normal operation and significantly improved fatigue resistance under extreme operating conditions.

We also have available engine bearings made of aluminum, alloy, and other materials.

| Part No. Main Bearing | Size (In) | Engine Model | Part No. Con. Rod Bearing |
|-----------------------|-----------|--------------|---------------------------|
| 5I7588 | Standard | 3066 | 5I7637 |
| 5I7784 | 0.01 | 3066 | 5I7794 |
| 5I7785 | 0.02 | 3066 | 5I7795 |
| 5I7786 | 0.03 | 3066 | 5I7796 |
| 4W8093 | Standard | 3204 | 8N6308 |
| 8N8976 | 0.01 | 3204 | 1N3821 |
| 8N8972 | 0.02 | 3204 | 1N3822 |
| 8N8972-030* | 0.03 | 3204 | 1N3822-030* |
| 8N8972-040* | 0.04 | 3204 | 1N3822-040* |
| 8N8974 | 0.05 | 3204 | 1W3906 |
| 4W8092 | Standard | 3204 | 8N6308 |
| 8N9020 | 0.05 | 3204 | 1W3906 |
| 8N9022 | 0.01 | 3204 | 1N3821 |

High Performance Copper/Lead Bearings

* Other part no. not included in the list are available. Please contact your sales representative if you have any questions. Part Numbers are used for reference purposes only

CTP Engine Bearings

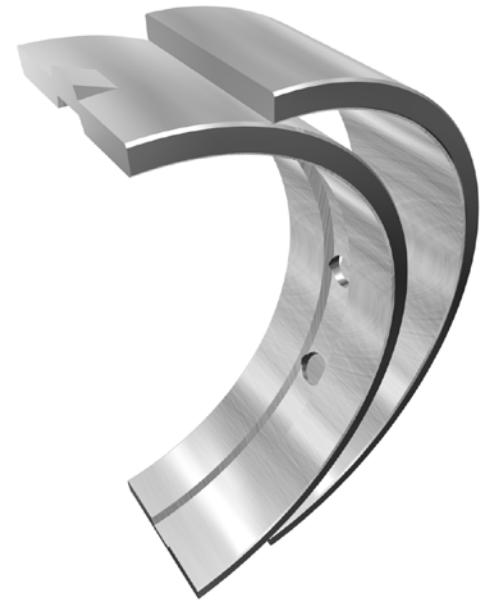
| Part No. Main Bearing | Size (In) | Engine Model | Part No. Con. Rod Bearing |
|--------------------------|-----------|------------------------|------------------------------|
| 8N9023 | 0.02 | 3204 | 1N3822 |
| 8N9023-030 | 0.03 | 3204 | 1N3822-030* |
| 8N9023-040 | 0.04 | 3204 | 1N3822-040* |
| 8N8973 | Standard | 3204 | 8N6308 |
| 8N8971 | 0.02 | 3204 | 1N3822 |
| 8N8975 | 0.05 | 3204 | 1W3906 |
| 1W0312 | Standard | 3204 | 8N6308 |
| 1W1661 | 0.01 | 3204 | 1N3821 |
| 1W1662 | 0.02 | 3204 | 1N3822 |
| 1W1663 | 0.05 | 3204 | 1W3905 |
| 4W5738 | Standard | 3306 | 8N8220 |
| 8N8225 | 0.01 | 3306 | 8N8221 |
| 8N8226 | 0.02 | 3306 | 8N8222 |
| 8N8227 | 0.03 | 3306 | 8N8223 |
| 8N8227-040* | 0.04 | 3306 | 8N8223-040* |
| 8N8227-050* | 0.05 | 3306 | 8N8223-050* |
| 8N8227-060* | 0.06 | 3306 | 8N8223-060* |
| 8N8228 | Standard | 3306 | 8N8220 |
| 8N8229 | 0.01 | 3306 | 8N8221 |
| 1011530 | Standard | 3114, 3116, 3126 | 2246638 |
| 1450163 | 0.01 | 3114, 3116, 3127 | 7C6976 |
| 1450165 | 0.02 | 3114, 3116, 3128 | 7C6977 |
| 7C6973 | 0.03 | 3114, 3116, 3129 | N/A |
| 1077708 | Standard | 3114, 3116, 3130 | 2246638 |
| 1450162 | 0.01 | 3114, 3116, 3131 | 7C6976 |
| 1450164 | 0.02 | 3114, 3116, 3132 | 7C6977 |
| 7C6963 | 0.03 | 3114, 3116, 3133 | N/A |
| 4W8092 | Standard | 3145, 3150, 3160, 3208 | 9N5923 |
| 8N9022 | 0.01 | 3145, 3150, 3160, 3208 | 9N5924 |
| 8N9023 | 0.02 | 3145, 3150, 3160, 3208 | 9N5925 |
| 8N9023-030 | 0.03 | 3145, 3150, 3160, 3208 | 9N5925-030* |
| 8N9023-040 | 0.04 | 3145, 3150, 3160, 3208 | 9N5925-040* |
| 8N9020 | 0.05 | 3145, 3150, 3160, 3208 | 9N5926 |
| 4W8093 | Standard | 3208 Late | 7E7894 |



* Other part no. not included in the list are available. Please contact your sales representative if you have any questions.
Part Numbers are used for reference purposes only

CTP Engine Bearings

| Part No. Main Bearing | Size (In) | Engine Model | Part No. Con. Rod Bearing |
|--------------------------|-----------|--------------------------|------------------------------|
| 8N8972 | 0.02 | 3208 Late | 9N5921 |
| 8N8972-030* | 0.03 | 3208 Late | 9N5921-030* |
| 8N8972-040* | 0.04 | 3208 Late | 9N5921-040* |
| 8N8974 | 0.05 | 3208 Late | 9N5922 |
| 8N8976 | 0.01 | 3208 Late | 9N5920 |
| 4W8092 | Standard | 3208 Late | 7E7894 |
| 8N9022 | 0.01 | 3208 Late | 9N5920 |
| 8N9023 | 0.02 | 3208 Late | 9N5921 |
| 8N9023-030* | 0.03 | 3208 Late | 9N5921-030* |
| 8N9023-040* | 0.04 | 3208 Late | 9N5921-040* |
| 8N9020 | 0.05 | 3208 Late | 9N5922 |
| 4W8091 | Standard | 3208, 3160 | 9N5923 |
| 8N9065 | 0.01 | 3208, 3160 | 9N5924 |
| 8N9064 | 0.02 | 3208, 3160 | 9N5925 |
| 4W8091-030 | 0.03 | 3208, 3160 | 9N5925-030* |
| 4W8091-040 | 0.04 | 3208, 3160 | 9N5925-040* |
| 2170390 | Standard | 3406/B, 3408/B, 3412/B | 9Y9497 |
| 4W5492-010* | 0.01 | 3406/B, 3408/B, 3412/B | 9Y9497-010* |
| 4W5492-020* | 0.02 | 3406/B, 3408/B, 3412/B | 9Y9497-020* |
| 4W5698 | 0.025 | 3406/B, 3408/B, 3412/B | 4W5702 |
| 4W5698-030 | 0.03 | 3406/B, 3408/B, 3412/B | 4W5702 |
| 4W5698-040 | 0.04 | 3406/B, 3408/B, 3412/B | 4W5702 |
| 4W5699 | 0.05 | 3406/B, 3408/B, 3412/B | 4W5703 |
| 2170390 | Standard | 3406C, 3406E | 9Y7735 |
| 4W5492-010* | 0.01 | 3406C, 3406E | 9Y7735-010* |
| 4W5698 | 0.025 | 3406C, 3406E | 7E0558 |
| 4W5698-030 | 0.03 | 3406C, 3406E | N/A |
| 4W5698-040 | 0.04 | 3406C, 3406E | N/A |
| 4W5699 | 0.05 | 3406C, 3406E | 7E0559 |
| 4W5700 | Standard | 3408, 3408B, 3412 | 9Y9497 |
| 4W5701 | 0.01 | 3408, 3408B, 3412 | 4W5702 |
| 1496031 | Standard | 3508, 3508B, 3512, 3512B | 1077331 |
| 1496032 | 0.025 | 3508, 3508B, 3512, 3512B | 1077332 |
| 1496033 | 0.05 | 3508, 3508B, 3512, 3512B | 1077333 |
| 2110587 | Standard | C10 | 2170577 |



* Other part no. not included in the list are available. Please contact your sales representative if you have any questions.
Part Numbers are used for reference purposes only

CTP Engine Bearings

| Part No. Main Bearing | Size (In) | Engine Model | Part No. Con. Rod Bearing |
|-----------------------|-----------|---------------|---------------------------|
| 1280400 | 0.51 | C10 | 1280390 |
| 1280401 | 0.76 | C10 | 1280391 |
| 2110588 | Standard | C11, C12, C13 | 1161089 |
| 1280382 | 0.51 | C11, C12, C13 | 1280395 |
| 1280383 | 0.76 | C11, C12, C13 | 1280396 |
| 1512939 | Standard | C9 | 2133190/1608194 |
| 1N4316 | Standard | D353, G353D | 1N4336 |
| 1N4319 | 0.025 | D353, G353D | 1N4337 |
| 1N4322 | 0.05 | D353, G353D | 1N4338 |
| 8N7764 | Standard | D379, G379 | 8N7769 |
| 8N7765 | 0.025 | D379, G379 | 8N7770 |
| 8N7766 | 0.05 | D379, G379 | 8N7771 |
| 7W2138 | Standard | Tractors 619C | 7W2136 |
| 8N5346 | 0.01 | Tractors 619C | 8N5339 |
| 8N5347 | 0.05 | Tractors 619C | 8N5338 |
| 8N7923 | Standard | Tractors D7E | 8N7933 |
| 8N7923-010 | 0.01 | Tractors D7E | 8N7933-010* |
| 8N7923-020 | 0.02 | Tractors D7E | 8N7933-020* |
| 8N7923-030 | 0.03 | Tractors D7E | 8N7933-030* |
| 8N7923-040 | 0.04 | Tractors D7E | 8N7933-040* |
| 8N7924 | 0.025 | Tractors D7E | 8N7934 |
| 8N7925 | 0.05 | Tractors D7E | 8N7935 |

* Special Oversizes in Stock. Please use part number as described (-followed by size)

The sizes shown on this reference chart are given in inches. There is a gradual change in the industry to the use of millimeters instead of inches for size identification marks on engine main and connecting rod bearings. The chart shows a comparison of millimeter to inch dimensions for different sizes of bearings.

| Inches | Millimeters |
|--------|-------------|
| 0.005 | 0.130 |
| 0.010 | 0.250 |
| 0.020 | 0.500 |
| 0.025 | 0.640 |
| 0.030 | 0.750 |
| 0.050 | 1.270 |

Conversion Factors: To change millimeters to inches, multiply millimeters by .03937.
To change inches to millimeters, multiply inches by 25.4

* Other part no. not included in the list are available. Please contact your sales representative if you have any questions.
Part Numbers are used for reference purposes only